

FOR LEASE

Birchwood Medical Center
500 Birchwood Avenue



Rarely Available Medical Office Space

Suite 500-A: 944 SF

- Nice reception area with 2 exam rooms, 1 office, and a work/nursing station
- Class A medical building complex
- Great location near St. Joseph Hospital
- Easy freeway access
- Near other medical services
- Ample parking
- Available May 1, 2017

[CBA Listing # 584290](#) [LoopNet Listing # 20260207](#)



Sales, Leasing, Management
Office, Retail and Industrial Properties
114 W Magnolia Street, Suite 302, Bellingham, WA 98225

For information contact:

Lesley Newman or
Jim Bjerke

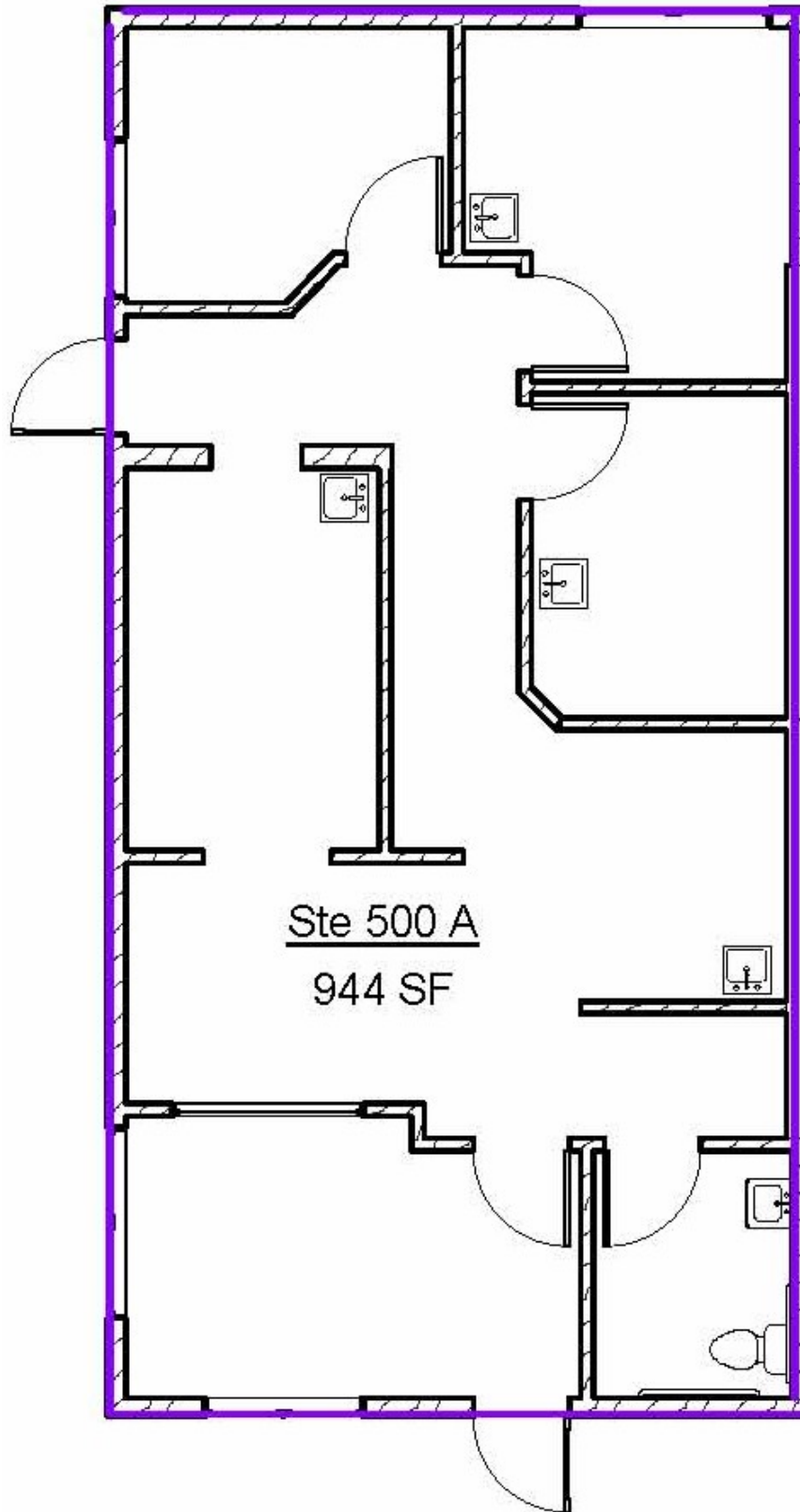
(360) 671-4200 ext. 107
Lesley@pacificcontinentalrealty.com

2017/04

FLOOR PLAN

Suite 500 A

944 SF



* not to scale