

# FOR LEASE/SALE

**164 Bay Lyn Dr, Lynden, WA**



## **Commercial Condo Unit in Prime North County Location**

**Suite D : 2,197 SF For Sale **PENDING** Suite E: 2,197 For Sale  
Suite F 2,197 SF For Lease/Sale - **PENDING****

- 2,197 SF of open space including a 550 SF mezzanine.
- 17' clear height, 14'x14' roll-up door and man door.
- Includes gas heating unit and bathroom.
- Prime north county location just off the Guide Meridian in Lynden, easy access for Canadian Business and zoned regional commercial services.

**CBA** Property #261566  Lease Listing #20134535 Sale Listing #20134937



Sales, Leasing, Management  
Office, Retail and Industrial Properties

114 W. Magnolia Street, Suite 302, Bellingham, WA 98225

For information contact:

2017/04

**Scott Walker**

(360) 220-0370

scott@pacificcontinentalrealty.com  
jim@pacificcontinentalrealty.com

# Premier Storage Condominium

164 Bay Lyn Dr, Lynden WA



Sales, Leasing, Management  
Office, Retail and Industrial Properties

114 W. Magnolia Street, Suite 302, Bellingham, WA 98225

For information contact:

**Scott Walker**

(360) 220-0370

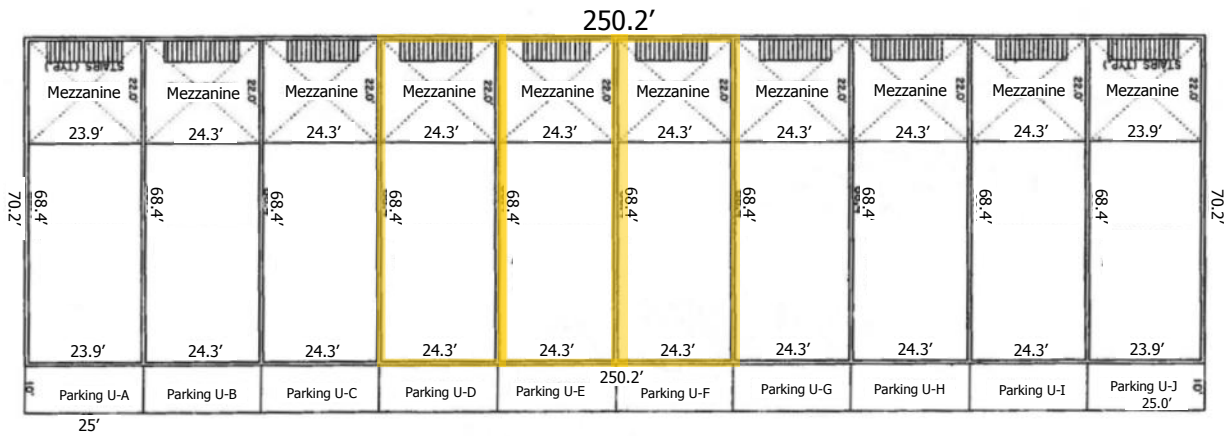
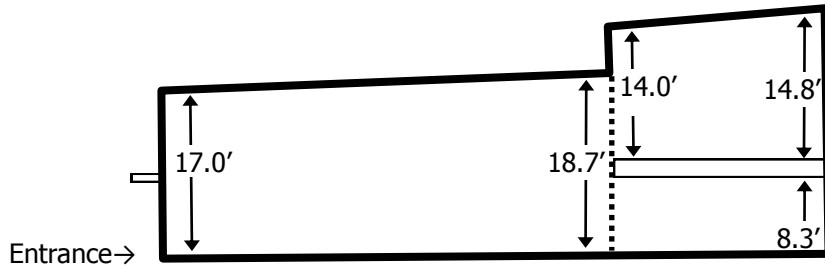
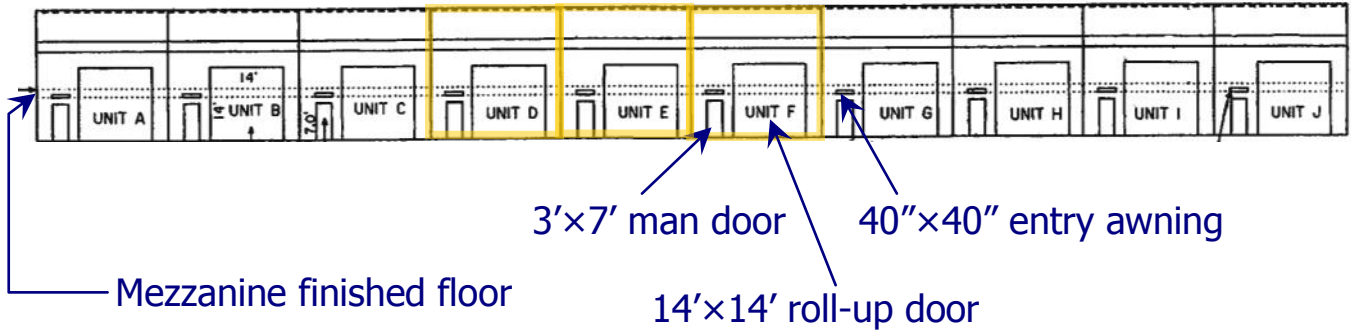
[scott@pacificcontinentalrealty.com](mailto:scott@pacificcontinentalrealty.com)

[jim@pacificcontinentalrealty.com](mailto:jim@pacificcontinentalrealty.com)

# Premier Storage Condominium

164 Bay Lyn Dr, Lynden WA

Suite D 2,197 SF Suite E 2,197 SF Suite F 2,197 SF



Sales, Leasing, Management  
Office, Retail and Industrial Properties

114 W. Magnolia Street, Suite 302, Bellingham, WA 98225

For information contact:

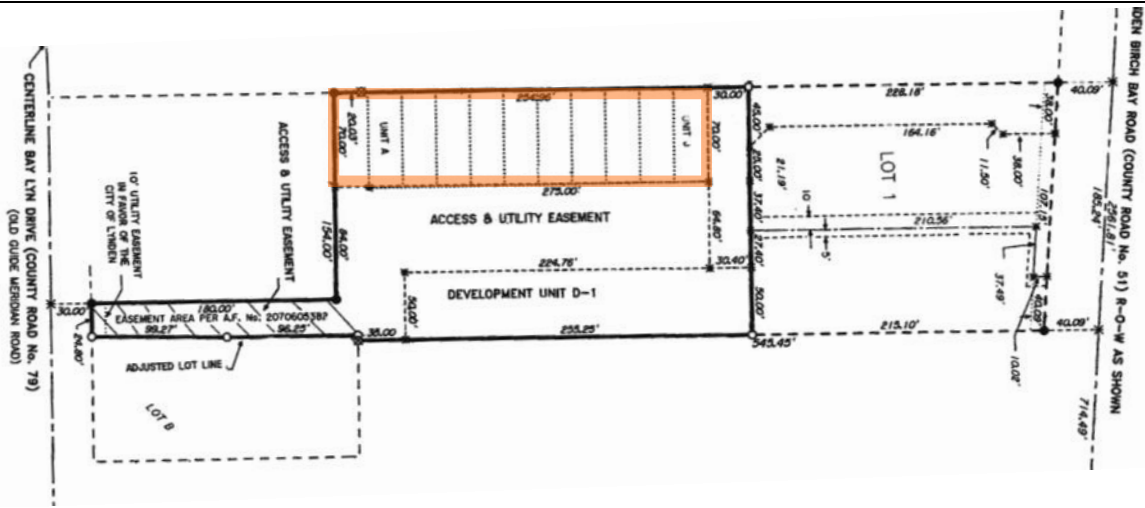
**Scott Walker**

(360) 220-0370

scott@pacificcontinentalrealty.com

jim@pacificcontinentalrealty.com





Sales, Leasing, Management  
Office, Retail and Industrial Properties

114 W. Magnolia Street, Suite 302, Bellingham, WA 98225

For information contact:

**Scott Walker**

(360) 220-0370

scott@pacificcontinentalrealty.com

jim@pacificcontinentalrealty.com