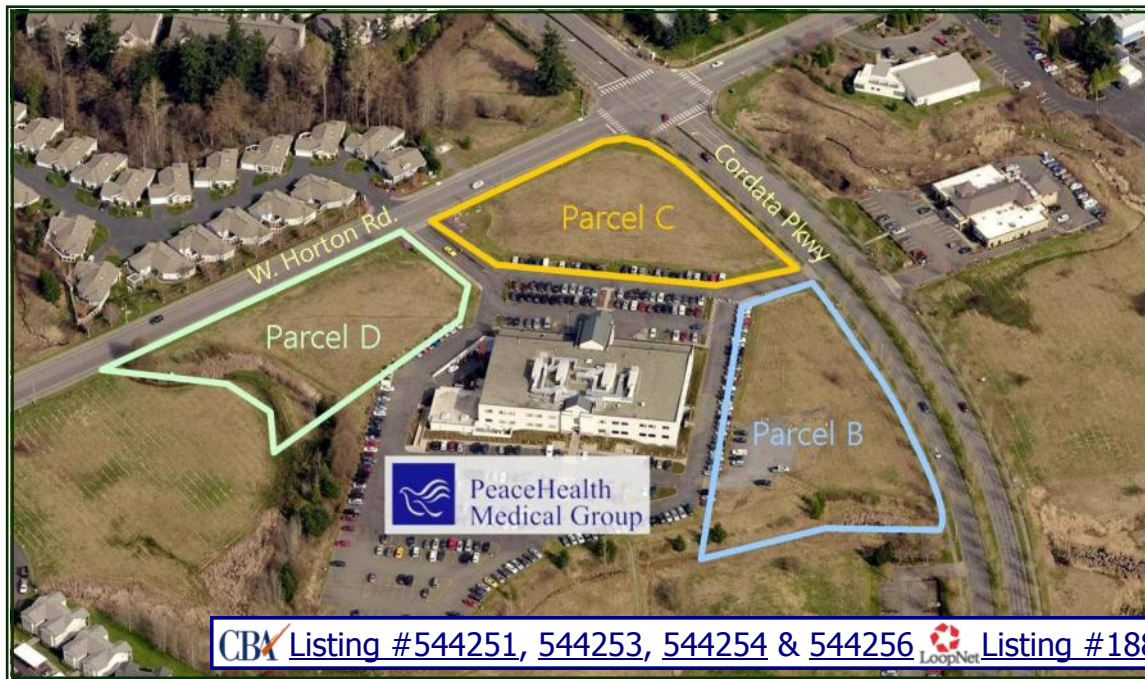


FOR SALE

***Cordata Pkwy & W. Horton Rd.
Bellingham, WA***



Land for Sale Adjacent to PeaceHealth Cordata Campus

Parcel B:
1.62 acres

Parcel C:
1.42 acres

Parcel D:
1.25 acres

- 3 prime land parcels for a total of 4.29 acres at the intersection of Cordata Pkwy and W. Horton Rd.
- Centrally located in the fast-growing Cordata neighborhood
- The parcels are in an institutional zone that allows a mix of office, medical and institutional uses
- Recently rezoned to permit general office uses as well
- Services to street & curb easements to street



Sales, Leasing, Management
Office, Retail and Industrial Properties

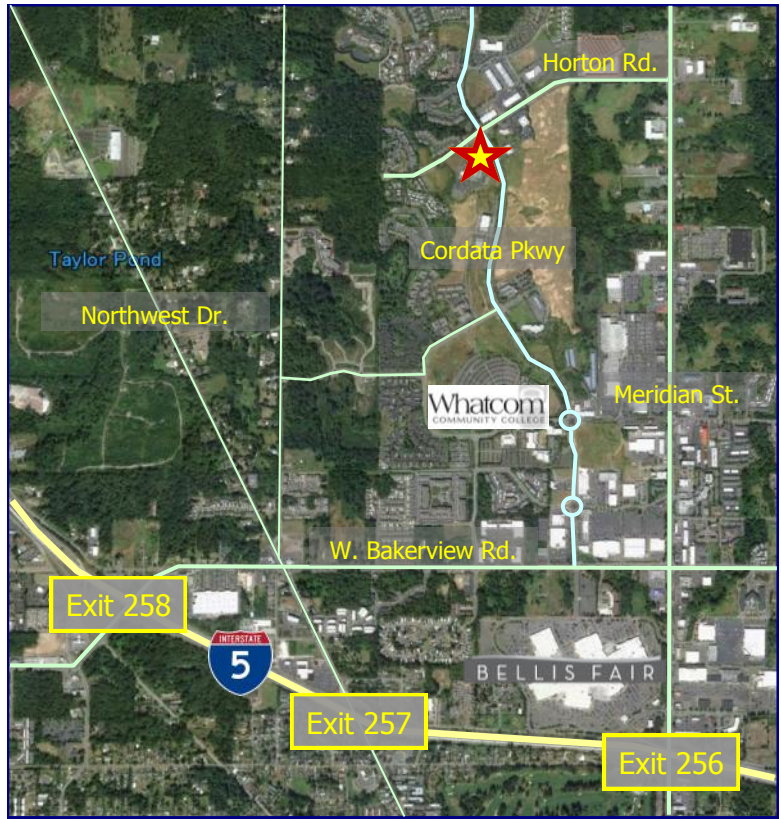
114 W. Magnolia Street, Suite 302, Bellingham, WA 98225

For information contact:

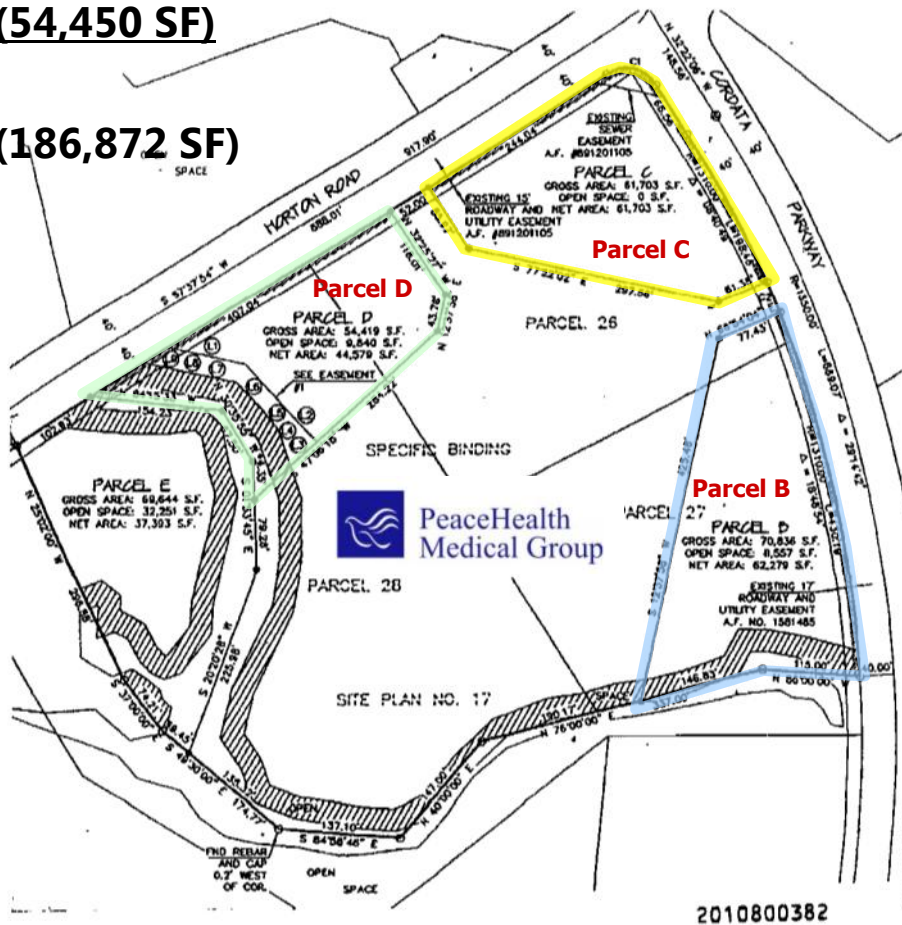
**Sandra Smith
or Jim Bjerke**

(360) 318-3037 or (360) 671-4200 ext 101
sandrasmithpcr@gmail.com
jim@pacificcontinentalrealty.com

2015/05



- Parcel B:**
1.62 acres (70,567 SF)
- Parcel C:**
1.42 acres (61,855 SF)
- Parcel D:**
1.25 acres (54,450 SF)
- Total:**
4.29 acres (186,872 SF)



2010800382