

# FOR LEASE



## Prime Office Space in Marina Building 851 Coho Way

**SUITE 301: 2,721 SF | SUITE 305: 1,515 SF | SUITE 307: 1,523 SF**  
**SUITE 308: 1,074 SF | SUITE 310: 1,265 SF**

- Excellent views
- Unlimited parking
- Wired for high speed internet
- Great working environment
- Suites have opening windows
- Gas & electricity is separately metered
- Easy access to I-5
- High pride of ownership
- Elevator access
- Rents quoted include Triple Net costs
- Walking distance to Zuanich Park, Bellwether Hotel and numerous exceptional restaurants



Sales, Leasing, Management  
Office, Retail and Industrial Properties

114 W. Magnolia Street, Suite 302, Bellingham, WA 98225

For information contact:

**Jim Bjerke or  
Heather Baker**

(360) 671-4200

[jim@pacificcontinentalrealty.com](mailto:jim@pacificcontinentalrealty.com)

[heather@pacificcontinentalrealty.com](mailto:heather@pacificcontinentalrealty.com)

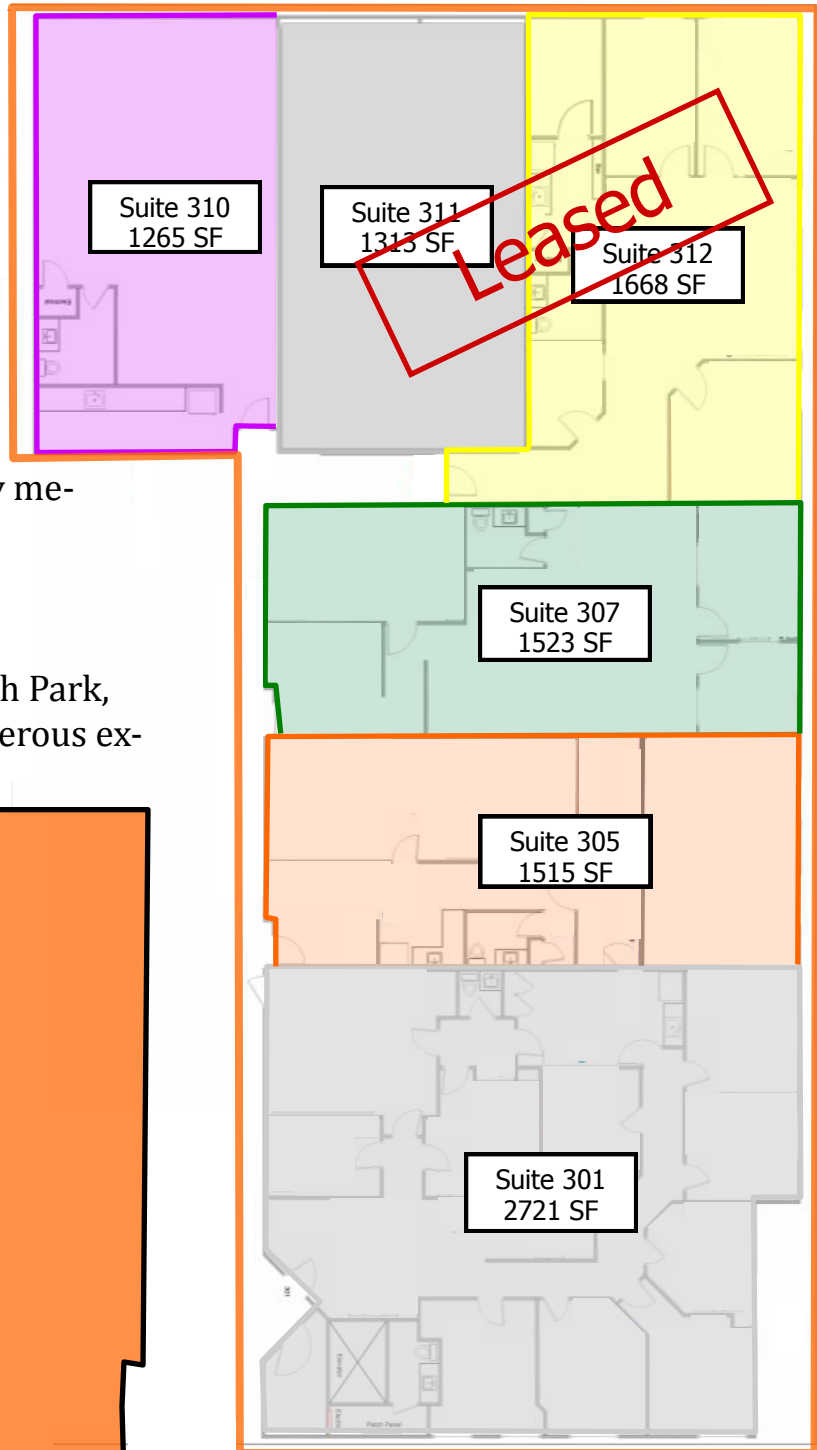
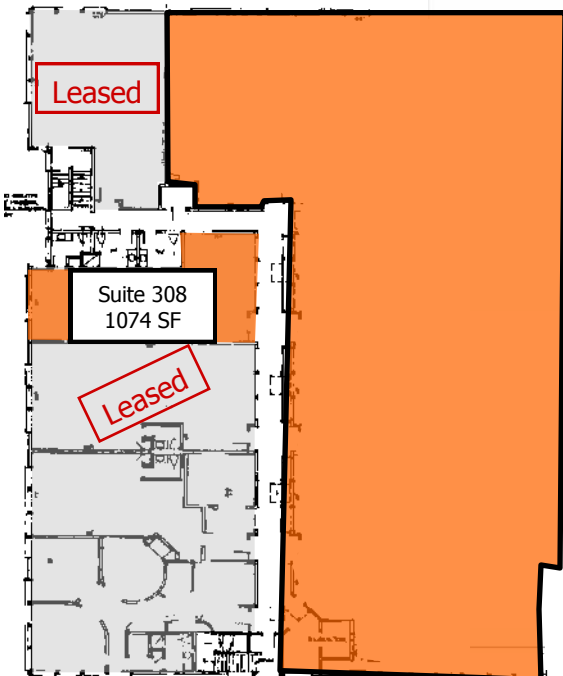
2017/10

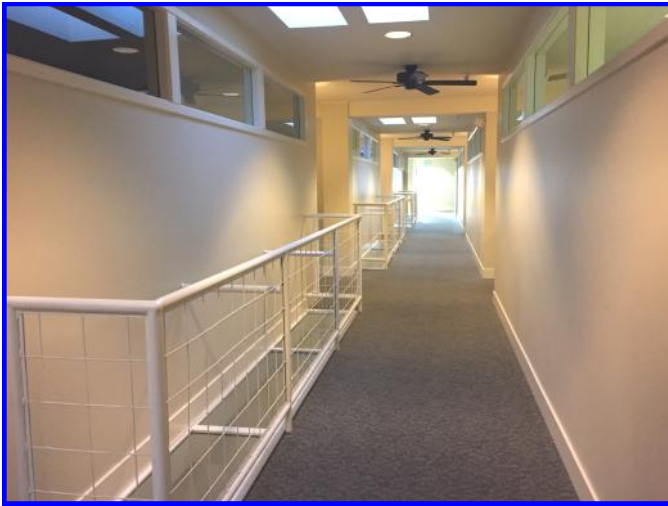
# MARINA BUILDING 851 COHO



## Office spaces available:

- ◇ Exceptional views.
- ◇ Unlimited parking.
- ◇ High speed internet.
- ◇ Gas & electricity separately metered.
- ◇ Elevator to the 3rd floor.
- ◇ High pride of ownership.
- ◇ Walking distance to Zuanich Park, Bellwether Hotel, and numerous exceptional restaurants.





**3RD FLOOR HALLWAY**



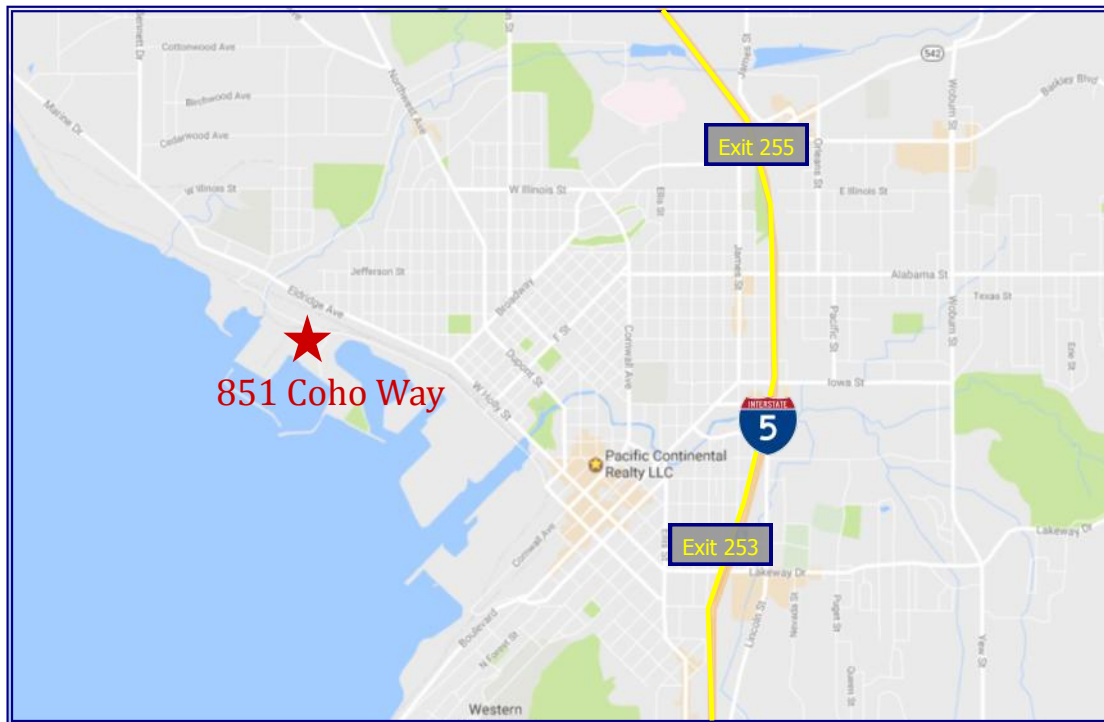
**KITCHENETTE  
&  
PRIVATE BATHROOM  
IN ALL SUITES**



**GREAT WORKING ENVIRONMENT**



# Professional Office Space at Squalicum Harbor



**Pacific  
Continental  
Realty  
LLC**  
Sales, Leasing, Management  
Office, Retail and Industrial Properties  
114 W. Magnolia Street, Suite 302, Bellingham, WA 98225

For information contact:  
**Jim Bjerke or  
Heather Baker**

(360) 671-4200  
jim@pacificcontinentalrealty.com  
heather@pacificcontinentalrealty.com