

FOR LEASE

2925 Roeder Avenue - Bellingham, WA



CBA Property #191089  Listing #15681321

Available Space: Floor One: 1,736 SF (retail/office) & 5,686 SF Divisible (office)

Building Information:

- 22,992 SF office building with Gold LEED certification pending, divisible to 1,549 SF
- Located on Bellingham's waterfront with 360 degree views from all three floors
- Liberal use of windows allows for tremendous natural light throughout the building
- Newer building with flexible floor plans to suit your needs
- Private rooftop deck showcases working waterfront and views of Bellingham Bay
- Windows on all floors can be opened
- Gold LEED certification leads to lower expenses and higher productivity rates



Sales, Leasing, Management
Office, Retail and Industrial Properties
114 W. Magnolia Street, Suite 302, Bellingham, WA 98225

For information contact:

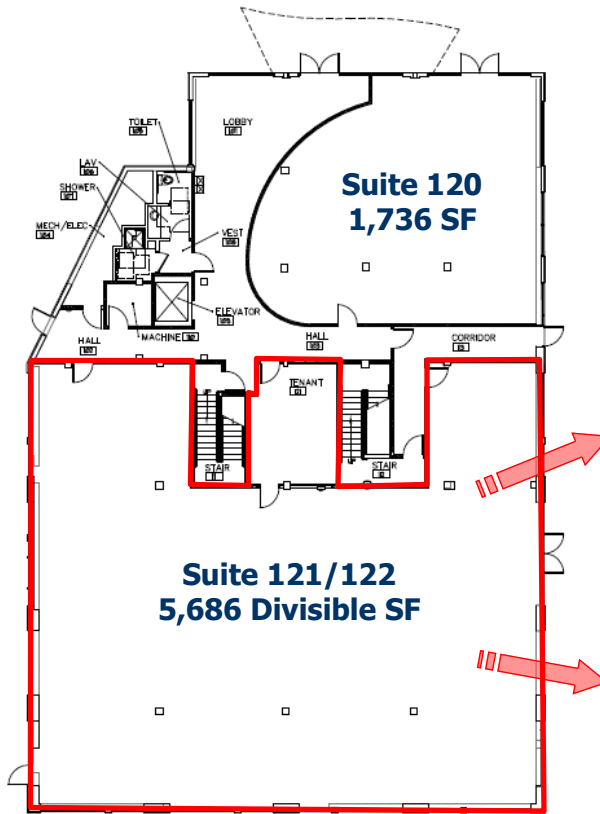
Heather Baker
or Jim Bjerke

(360) 671-4200 ex 105
heather@pacificcontinentalrealty.com
jim@pacificcontinentalrealty.com

2017/03

ROEDER AVENUE

Floor One: 1,736 SF & 5,686 Divisible SF



5,686 Divisible SF



Lobby



Easy Access

Wide Open Space

Tons of Natural Light

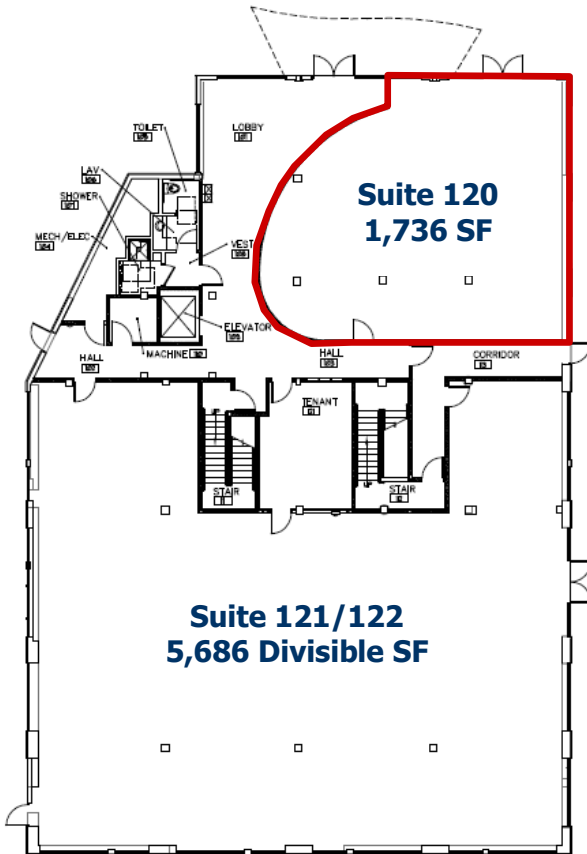


Sales, Leasing, Management
Office, Retail and Industrial Properties
114 W. Magnolia Street, Suite 302, Bellingham, WA 98225

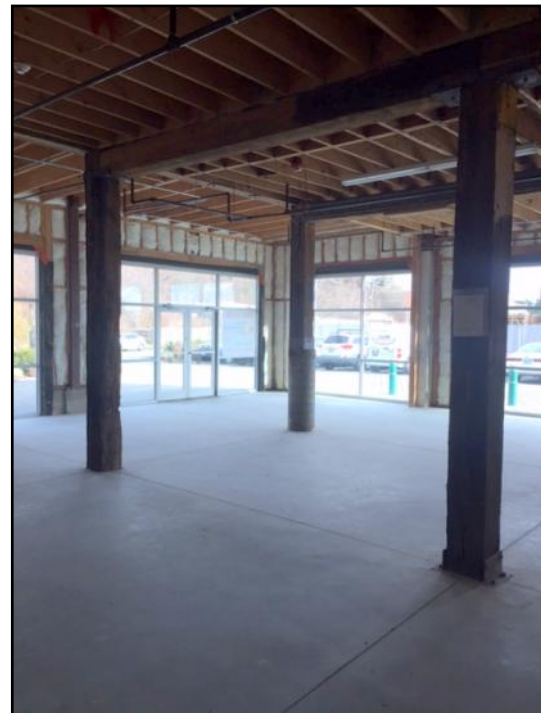
For information contact:
Heather Baker
or **Jim Bjerke**

(360) 671-4200 ex 105
heather@pacificcontinentalrealty.com
jim@pacificcontinentalrealty.com

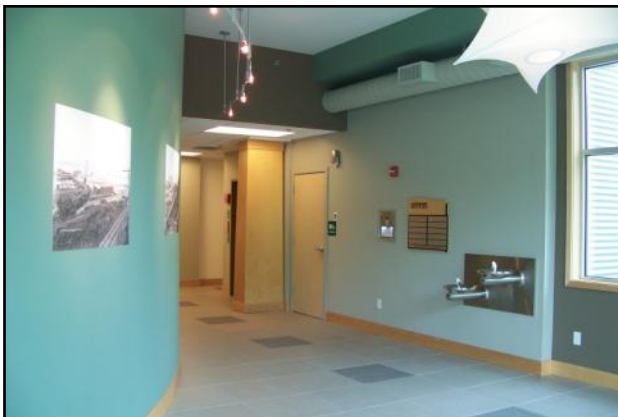
ROEDER AVENUE



1,736 SF



Lobby

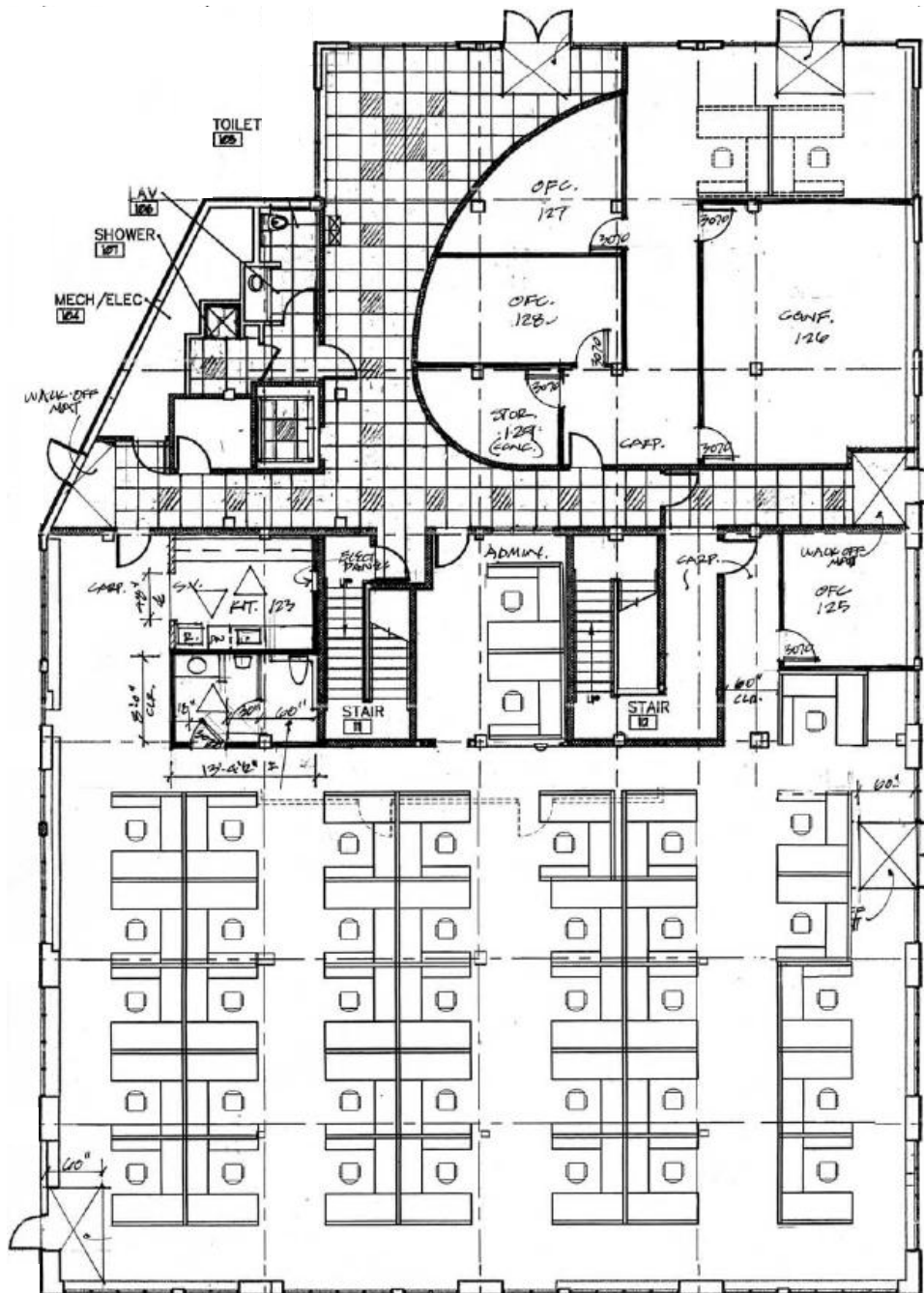


Sales, Leasing, Management
Office, Retail and Industrial Properties
114 W. Magnolia Street, Suite 302, Bellingham, WA 98225

For information contact:
Heather Baker
or Jim Bjerke

(360) 671-4200 ex 105
heather@pacificcontinentalrealty.com
jim@pacificcontinentalrealty.com

Potential Floor Plan Layouts for Suites 120, 121-122



Sales, Leasing, Management
Office, Retail and Industrial Properties

114 W. Magnolia Street, Suite 302, Bellingham, WA 98225

For information contact:

**Heather Baker
or Jim Bjerke**

(360) 671-4200 ex 105

heather@pacificcontinentalrealty.com

jim@pacificcontinentalrealty.com