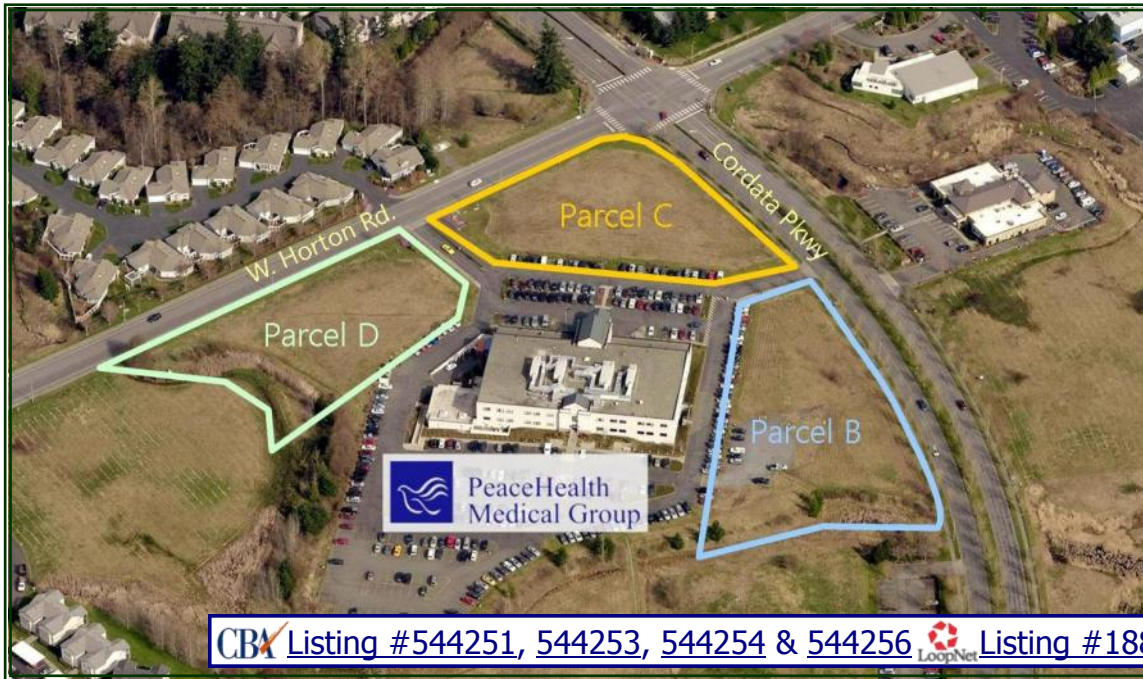


# FOR SALE

***Cordata Pkwy & W. Horton Rd.,  
Bellingham, WA***



## **Land for Sale Adjacent to PeaceHealth Cordata Campus**

**Parcel B:**  
**1.62 acres**

**Parcel C:**  
**1.42 acres**

**Parcel D:**  
**1.25 acres**

- 3 prime land parcels for a total of 4.29 acres at the intersection of Cordata Pkwy and W. Horton Rd.
- Centrally located in the fast-growing Cordata neighborhood
- The parcels are in an institutional zone that allows a mix of office, medical and institutional uses
- Recently rezoned to permit general office uses as well
- Services to street & curb easements to street



Sales, Leasing, Management  
Office, Retail and Industrial Properties

114 W. Magnolia Street, Suite 302, Bellingham, WA 98225

For information contact:

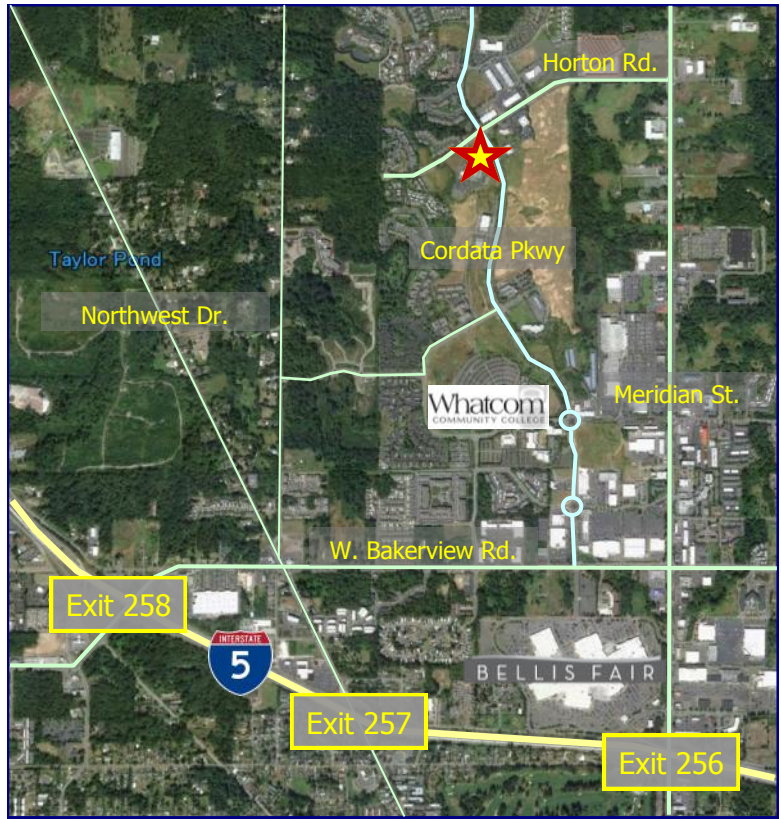
**Sandra Smith**  
**or Jim Bjerke**

(360) 671-4200 ex 115

sandra@pacificcontinentalrealty.com

jim@pacificcontinentalrealty.com

2015/03



- Parcel B:**  
1.62 acres (70,567 SF)
- Parcel C:**  
1.42 acres (61,855 SF)
- Parcel D:**  
1.25 acres (54,450 SF)
- Total:**  
4.29 acres (186,872 SF)

