

# FOR LEASE

**5500 Hovander Road, Ferndale, WA**



**Available Space:** 5501 Building: 16,800 RSF  
5503 Building: 32,800 RSF - Divisible to 10,000 RSF

## **Building Information:**

- Ferndale Business Park is located within easy access of downtown Ferndale and the excellent amenities and source of labor it provides
- Loading docks, and grade level doors
- High quality modern buildings with convenient access
- Just minutes from I-5 north and south
- Clear span or limited obstructions, with ample parking on-site



114 W. Magnolia, Suite 302  
Bellingham, WA 98225

For information contact:

**Jim Bjerke**

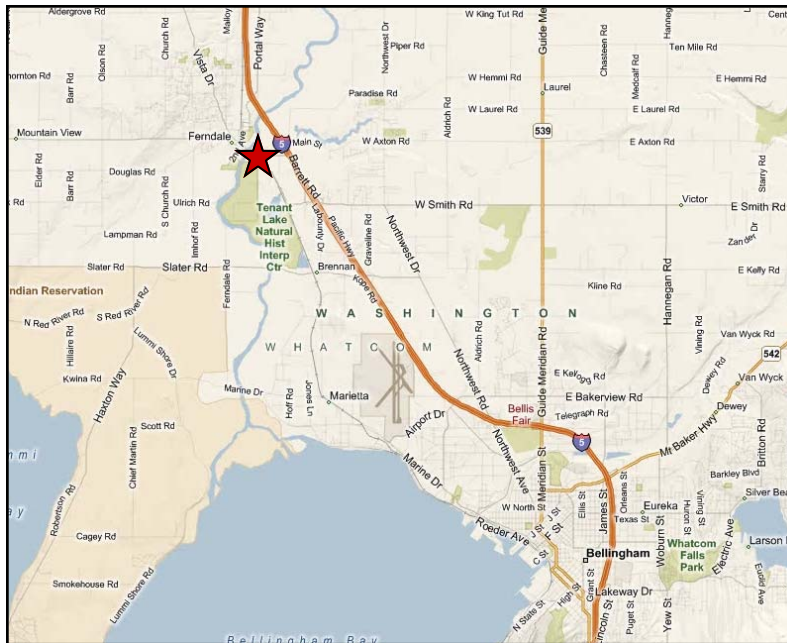
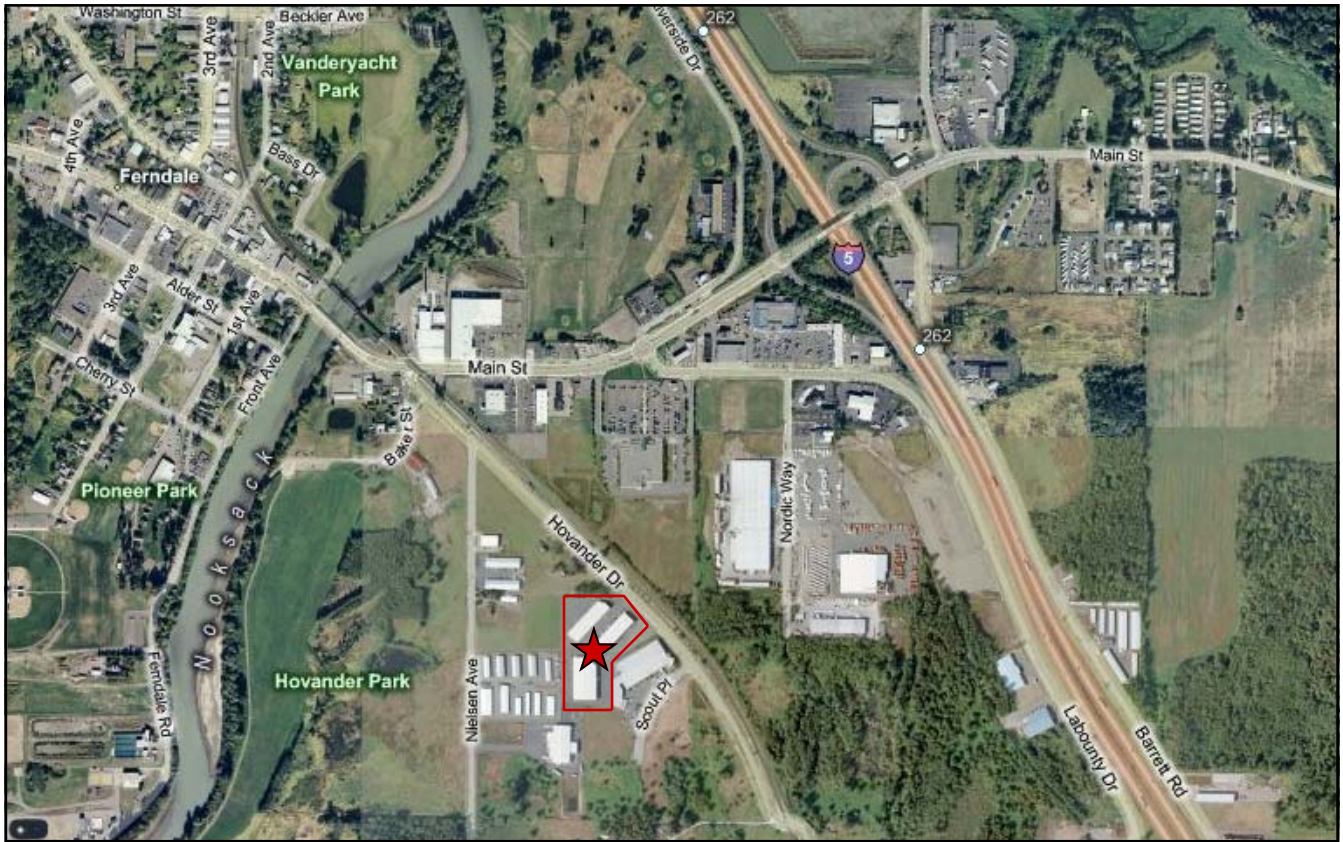
(360) 671-4200 x101

[jim@pacificcontinentalrealty.com](mailto:jim@pacificcontinentalrealty.com)

**Doug Meyer**

(360) 671-4200 x102

[doug@pacificcontinentalrealty.com](mailto:doug@pacificcontinentalrealty.com)



114 W. Magnolia, Suite 302  
Bellingham, WA 98225

For information contact:

**Jim Bjerke**

**Doug Meyer**

(360) 671-4200 x101

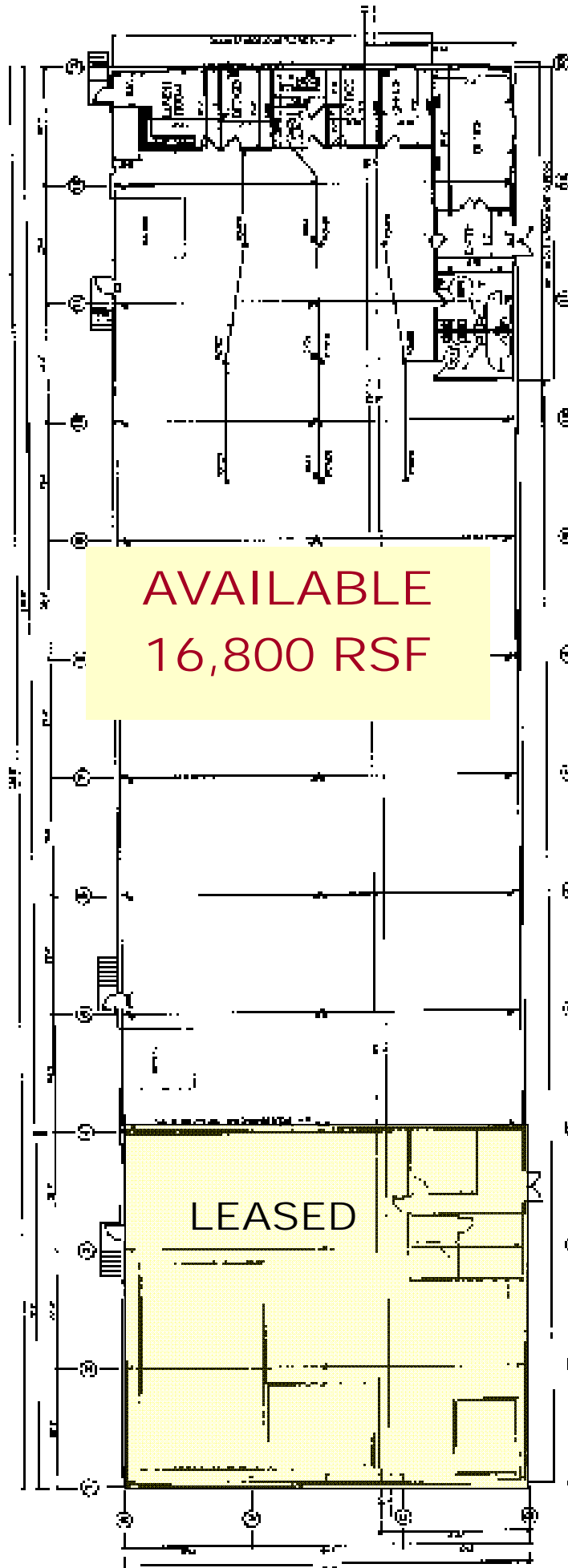
(360) 671-4200 x102

[jim@pacificcontinentalrealty.com](mailto:jim@pacificcontinentalrealty.com)

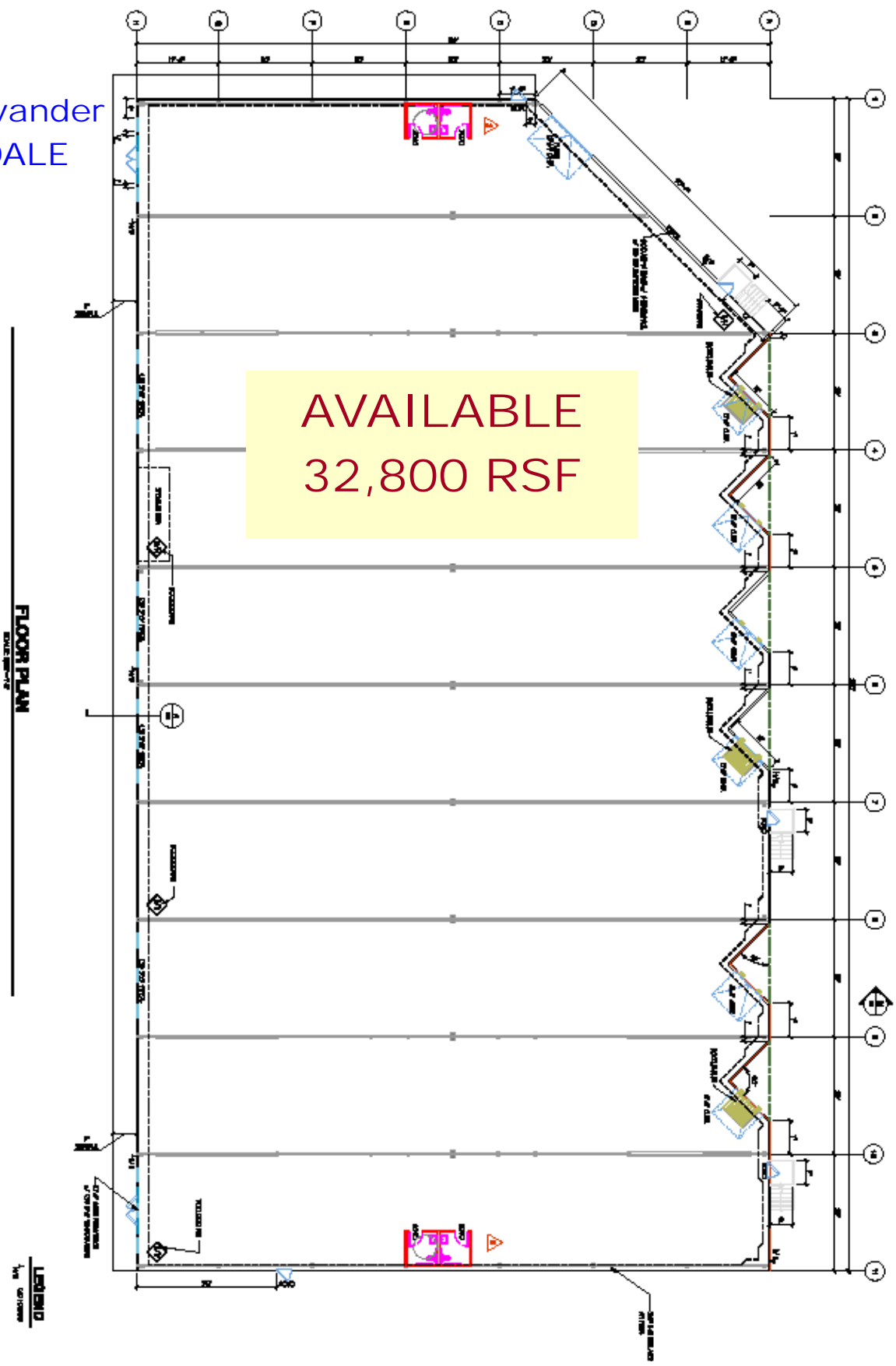
[doug@pacificcontinentalrealty.com](mailto:doug@pacificcontinentalrealty.com)



5501 Hovander  
FERNDALE



5503 Hovander  
FERNDALE



AVAILABLE  
32,800 RSF

FLOOR PLAN

1/4" = 10'-0"